



## APRIL EVENT

Monthly Meeting: 8 p.m. Monday, April 13, 2020

From the comfort of your living room via Zoom!

### Kevin Holcomb on Warm Growing Pleurothallids

*The details of the Zoom meeting will be emailed a few days before the meeting*

.....

**Please pay your membership dues!**

---

### ATLANTA ORCHID SOCIETY ACTIVITIES AND COVID-19

The board has decided that our monthly in-person meetings will be suspended until further notice.

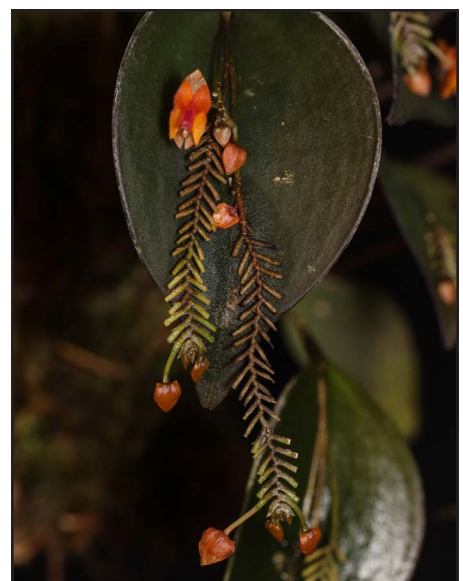
Additionally, the annual auction that was scheduled for April has been postponed and will be rescheduled. We regret taking these actions but the safety and well being of our members, guests and speakers comes first. We will continuously monitor the situation and will resume our normal activities as soon as possible.

---

### Kevin Holcomb: Warm Growing Pleurothallids

Kevin Holcomb has been growing pleurothallids in his Atlanta home for the past 10 years. He is also an avid photographer, and his orchid photos have been featured in multiple books, magazines, and scientific papers.

Kevin will give us a virtual tour of his growing area, and discuss some of the species he grows.



*Lepanthes fimbriata*

## ATLANTA ORCHID SOCIETY

### Officers

**President**

[Helen \(HB\) Blythe-Hart](#) 770-656-4054

**Vice-President/Programs**

[Danny Lentz](#)

**Secretary**

[Jody Gomez](#)

**Treasurer**

[Jon Crate](#) 770-846-9541

270 17th Street NW, Unit 4501  
Atlanta, GA 30363

**Immediate Past President**

[David Mellard](#) 404-310-9899

### Trustees

[Trac Nguyen](#)

[Maegan Brass](#)

[Atsushi Matsumoto](#)

[Carl Quattlebaum](#)

[Larry Kikkert](#)

[Véronique Perrot](#)

### Volunteers

AOS Rep – [Barbara Barnett](#)

Greengrowers – [Danny Lentz](#)

Librarian –

MAOC Rep – [Doug Hartong](#)

Meeting Hospitality –

Membership – [Barbara Barnett](#) &

[Maegan Brass](#)

Education and Outreach – [Lynne Gollob](#)

Silent Auction – [Carson Barnes](#)

Monthly Ribbon Judging – [David Mellard](#)

Newsletter – [Véronique Perrot](#) &

[Mark Reinke](#)

Orchid Digest Rep – [David Mellard](#)

Show Chairs (2020) – [Danny Lentz](#) &

[Jody Gomez](#)

Website/Social Media – [Danny Lentz](#) &

[Jeremie Carroll](#)

## The Atlanta Orchid Society Bulletin

Volume 61: Number 4 – April 2020

Newsletter Editors: [Véronique Perrot](#) & [Mark Reinke](#)

The [Atlanta Orchid Society](#) is affiliated with the [American Orchid Society](#), the [Orchid Digest Corporation](#), the [Mid-America Orchid Congress](#), and the [Garden Club of Georgia](#).

### Minutes of the March 9, 2020, Meeting of the Atlanta Orchid Society

The March 9th, 2020 meeting of the Atlanta Orchid Society was called to order by Helen Blythe-Hart, President, at 8 p.m. There were three guests introduced. Jon Crate made a motion to approve the meeting minutes from January, the motion was seconded by Carson Barnes, and was approved by the members present. There was no new business to discuss. The April 18th auction was announced.

Barbara Barnett discussed the upcoming Deep South Orchid Society show. Danny Lentz introduced Sam Tsui, who gave a presentation entitled, “The Brachypetalum and Parvisepalum Paphiopedilums and Their Culture.” After the presentation, Sam fielded questions from members. A ribbon judging was held, and the meeting was adjourned.

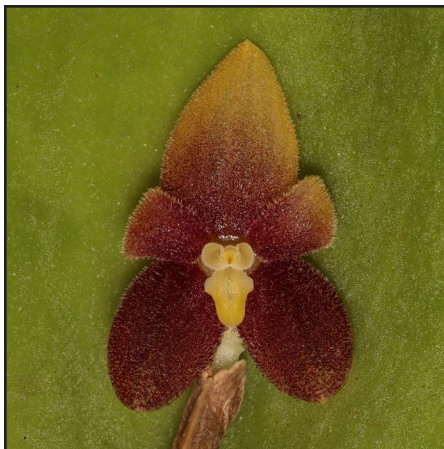
## Announcements, Notes, Classified...

### For the upcoming AtIOS online meeting

We may figure out how to do ribbon judging online later on, but for the time being, let’s show off our plants just for the pleasure of looking at beautiful flowers! Send pictures of your plants to Danny, and he’ll try to put together a slide show.

### New Members

Welcome to new members Tanika Morgan-Crawford from Conyers, and Andrew Becker from Atlanta.



Two more pleurothallids from Kevin Holcomb’s collection

## EVENTS CALENDAR

### April

- 4 - 5 – Asheville Orchid Show, [wncos.org](http://wncos.org)
- 11 – American Orchid Society monthly judging **CANCELED**
- 13 – Atlanta Orchid Society Monthly Meeting: Kevin Holcomb on Pleurothallids, via Zoom
- 18 – Atlanta Orchid Society Auction **POSTPONED**

### May

- 9 – American Orchid Society monthly judging (maybe)
- 11 – Atlanta Orchid Society Monthly Meeting, via Zoom: Fred Clarke (Sunset Valley Orchids) on Spotted and Splashed Cattleyas

### August

- 10 – Atlanta Orchid Society Monthly Meeting: Mark Reinke, probably on Cymbidiums

### September

- 14 – Atlanta Orchid Society Monthly Meeting: Dave Sorokowsky (Paph Paradise) on Paphiopedilums
- 25-27 – Atlanta Orchid Society Show

### October

- 12 – Atlanta Orchid Society Monthly Meeting: Peter T. Lin (Diamond Orchids)



ATLOS President Helen Blythe-Hart tends to her collection of freshly repotted kitchen windowsill orchids. *Paphiopedilum barbatum* var. *nigritum* just opened on a foot tall stem in a 2 1/2 inch pot!! It the third time it's bloomed in the past year. It's a highly recommended and very easy species to grow and bloom, with the bonus of having interesting light green mottled leaves. She's using this down time to do all the orchid essentials like repotting, grooming and communing with her orchids.



In 2016 we distributed seedlings of *Cattleya* Tropical Song x sib (*C. Tropical Glow* x *C. Mari's Song*) as a challenge plant. The challenge was to get more than four flowers on the plant. Roy Harrow is the first person to actually submit a photo of one of the plants in flower. (I had a bud starting on one of my plants but it blasted when I sprayed the plant

for mealy bugs.) Since this has been going a bit more slowly than we thought, I'm going to amend the rules. If no one has met the challenge by our June 2021 meeting, then Roy will win as the first person to actually show us a flower on one of the darn things.

-danny



# Atlanta Orchid Society Monthly Ribbon Winners March 2020

Notes by Mark Reinke; Photos by Danny Lentz

## Class I – Cattleya Group



**Blue** – *Guarianthe skinneri* forma *coerulea* ‘Orchidglade’ – **Carson Barnes**

This beautiful spring flowering species grows from Southern Mexico to Costa Rica where it is the national flower and called the Guaria Morada, which is loosely translated into English as “The Purple Country Girl.” The typical coloration is a bright, satiny purple, but there are a number of other color forms, including this one, which is the palest mauve. The interior of the lip in most cases is white and in many forms there is a shot of deeper purple in the throat.

*Gur. skinneri* is a tough bifoliate species that rather quickly and easily will become a specimen plant. The space between internodes means that it will require a fairly large container with time. Older leaves tend to show their age so out of flower the plants do not always look their best.

Still, when well grown, a plant in full flower is very impressive. There are an extraordinary 14 separate First Class Certificates awarded by the AOS to this species including as recently as 2018. Most of these awards are for purple forms, but a few are for alba forms or a particularly beautiful type known as alba oculata, with a pure white flower offset

by a dark purple throat. These superior plants show good form and flowers that span four inches or more. The number of cultural awards is almost uncountable, and many are for plants with flowers numbering well north of 200.

Culture for *Gur. skinneri* is rather straight forward and typical for Cattleya types, with a preference for bright light and good drainage. It can tolerate temperatures from cool to hot without complaint. If you ever see a reference from Costa Rican sources that claims the species can withstand considerable drought in “summer,” note that while that country is well north of the equator, the locals consider the dry season, which runs from December to April, to be “summer” and the rainy, cloudier balance of the year to be “winter.” While actively growing from May to November, this orchid should receive regular water and feeding, but needs less of both once new growths have hardened off in late fall through to flowering in late winter or spring.

**Red** – *Rhyncolaeliocattleya* Goldernell ‘Burdekin’ – **Danny Lentz & Dianne Morgan**

**White** – *Cattleya* C.G. Roebling ‘Blue Indigo’ – **Danny Lentz & Dianne Morgan**

## Class II – Cymbidium Group



**Blue** – *Cymbidium* unknown – **Danny Lentz & Dianne Morgan**



### JOIN THE ORCHID DIGEST CORPORATION

Don't let the name fool you, the Orchid Digest is a non-profit membership-based organization dedicated to orchids. Designed to appeal to the mid-range to advanced grower, nothing beats the Orchid Digest. For just \$39/year you get 4 issues of full-color, in-depth articles about orchids. The magazine is large format and the fourth issue of the year is always an extra-special edition devoted to a single genus. For membership application forms contact David Mellard (404-237-1694) or visit [www.orchiddigest.com](http://www.orchiddigest.com) to join online.

**Class III – Dendrobium Group**

**Blue + J.C. Mobley Cultural Award –**  
*Dendrobium spectabile* – **Carson Barnes**

This species, once mature, definitely lives up to its name. Per Baker's description: "ORIGIN/HABITAT: New Guinea, Bougainville, the Solomon Islands, and Vanuatu. Plants grow on trees in swampy lowland forests, lower mountain forests, or in planted coconut or Casuarina trees from sea level to 3600 ft. (0-1100 m). On ridge tops, they grow on the surface of the ground in thick moss and peat. The plants survive exposure to high light and hot temperatures at lower elevations, but they are more abundant in cool, shady lo-



cations at higher elevations."

Obviously, based on this description, *Den. spectabile* is adaptable to a fairly wide range of light and temperature. That said, the specimens that received AOS cultural awards with the most flowers were grown in warm climates such as Hawaii and South Florida. A plant like this one grown by Carson, with about a baker's dozen inflorescences and 150 flowers, has probably taken at least a decade to grow from a plant near blooming size that would be commonly available for purchase. Plants flower off of both recently matured and older canes, so the more growth, the more blossoms.

Photographing the bizarre structure of a single bloom is complicated enough,

describing it accurately is even more difficult. All the segments, including the lip, are twisted and curled, with undulating margins and pointed tips. The base color is usually a pale creamy green, but heavily overlaid and shaded with purple. The lip is often white in base color, but intensely overlaid with heavy purple veining.

The plant itself is generally robust with long fluted pseudobulbs topped by several large evergreen leaves. Mature plants are usually somewhere between 24 and 36 inches tall, but some are even taller. Inflorescences emerge from nodes just below and between the leaves and the flowers usually last about two months or sometimes longer. Best flowering is going to occur once the plants have filled their pot and are rootbound, so step this species up slowly, and be patient.

One of the best hybrids made with *Den. spectabile* is *Den. Violet Yamaji*, which is similarly robust, but has flowers heavily washed in violet purple that still bear some of the form of the species and last even longer on the plant. I have been grooming one of these for several years and this year it would have been the centerpiece of my exhibit at the Memphis Orchid Show at the start of May, until that event was sadly canceled. It has 19 inflorescences just beginning to open with a total of more than 225 flowers. The good news is that it will be even more spectacular *next* year.

**Red – *Dendrobium thyriflorum* – David Mellard**

**White – *Dendrobium* Mtn's Butterfly Kisses – George Guenther**



**American Orchid Society**  
Education. Conservation. Research.

## JOIN THE AMERICAN ORCHID SOCIETY

12 issues of *Orchids*, the Society's monthly full color magazine chock full of insightful articles and tempting ads for plants and supplies.

10% off purchases from the Society's Bookstore and Orchid Emporium.

Reduced or free admission to participating botanical gardens.

For a limited time, if you join for two years you will also get a \$30 gift certificate (good on an order of \$100 or more)

at any one of 13 commercial growers who advertise in *Orchids*.

**Membership now includes access to OrchidPro,  
the database that replaces OrchidsPlus**

**JOIN TODAY**

Single Membership, 1 year - \$79, 2 years - \$153

Student membership, 1 year - \$54, 2 years - \$103

JOIN OR RENEW ONLINE AT [www.aos.org](http://www.aos.org)

**Class IV – Epidendrum Group**

**Red – *Encyclia cordigera* variety *rosea* – Dan Williamson**

*Encyclia cordigera* has one of the most extensive ranges of any species in that genus, growing from Southern Mexico, down both coasts of Central America, and across the northern fringes of South America to Venezuela. One form has a white lip with a purple zone or spot in the center, and the other has a solid purple lip. In cultivation, both forms have been improved by selective breeding, and this plant represents an excellent example of the purple lipped form. The heart shaped lip is framed by bronze to chocolate colored segments that undulate and curl inward at their tips. The flowers are long lasting and the bloom season peaks in May.

For the size of the flower, the plants are fairly compact with shiny green rounded to pear shaped pseudobulbs topped usually by two, fairly broad, strap shaped leaves. The inflorescence can have a dozen or more flowers on larger, mature plants, and occasionally produce a side branch of several blooms. The fragrance can be spicy and powerful and is definitely one of the best in the genus.

Perfect drainage is essential to keeping this species happy, which will adapt to intermediate to warm temperatures. Plenty of water while actively growing, with somewhat less, and with as bright of light as possible in winter will aid in flowering. Some of the most colorful and outstanding *Encyclia* hybrids have been made with this species. Sadly, few seem to be commercially available at the moment.

**Class V – Oncidium Group**

**Blue – *Miltoniopsis roezlii* variety *xanthina* – Carson Barnes**

Hailing from lower elevation rain forests in Colombia and Panamá, this is a rare yellow form of the warmest growing species that make up our modern “Pansy Orchid” hybrids. It is also the species that imparts glorious fragrance into some of the more than 2500 registered hybrids that trace their ancestry back to it. On its own, the fragrance is even more powerful and lovely. Because it grows warmer than the hybrids, it should be easier for most growers to keep flourishing, happiest staying 68 or warmer at night, though adaptable to 50’s if you grow in a greenhouse.

The plants flower on every new spurt of growth throughout the year and the delicate yellow blooms, borne up to 4 to a spike, last easily two months. While a warmer grower than the hybrids, this orchid still does not thrive on neglect. It likes frequent watering with good drainage and only slight drying in between. Plants will make a clump quickly and should be divided about every two years. Bright, but filtered light is best. It will grow well under LED lights, but may need to be somewhat off to the side to reduce the intensity a bit. It is likely still a challenge to grow well if summered outdoors in the relentless summer heat of the South. This is something rare and special for someone who takes pride in their collection!

**Class VI – Slipper Alliance**

**Blue – *Paphiopedilum delenatii* – Danny Lentz & Dianne Morgan**

The flowers on this plant represent a high quality example of the species, which comes from Vietnam. The form is nicely flat and rounded and the lip has an intense pink-purple. There is also a flush of purple on the back edges of the petals, making it close in color to those described as *forma vinicolor*. Lower quality examples may be much paler in color and have a somewhat “floppy eared” look with petals that reflex and bend downward. It always pays to buy seedlings from reliable sources that use high quality parents if you want results that match this plant, with two flowers on a single inflorescence.

The clumping growths are relatively small with fans of fairly short leaves

**amazon**smile

You can help out the Atlanta Orchid Society simply by shopping at Amazon through their Amazon Smile program. To do this simply go to [smile.amazon.com](https://smile.amazon.com) every time you want to shop at Amazon. When you go to checkout for the first time, you will be asked to designate your charity. If you type Atlanta Orchid Society in the search bar, we are the only result that comes up. Select that one. You can change the charity at any time, by following the directions on the About page. All of the details of the Amazon Smile program can be found on the Amazon site at: [smile.amazon.com/gp/chpf/about/](https://smile.amazon.com/gp/chpf/about/)

that are light green, heavily variegated with deeper green, and a reverse strongly mottled or dotted with purple. In the wild, plants typically grow on acidic, humus laden soils in pockets and ledges on rocky slopes. Many growers add some sphagnum moss to their mix for this species to help produce those conditions. Because the mix is likely to break down quickly, frequent repotting is recommended.

Many outstanding hybrids have been created using this species, and the top ten share more than 500 awards between them from judging programs around the world. The most recognized of all is the cross between this species and *Paph. micranthum*, called *Paph. Magic Lantern*, with about 100 awards from the AOS and numerous more globally.

**Red – *Paphiopedilum appletonianum* – Danny Lentz & Dianne Morgan**

**Red – *Paphiopedilum* Natasha Von Fox – Danny Lentz & Dianne Morgan**

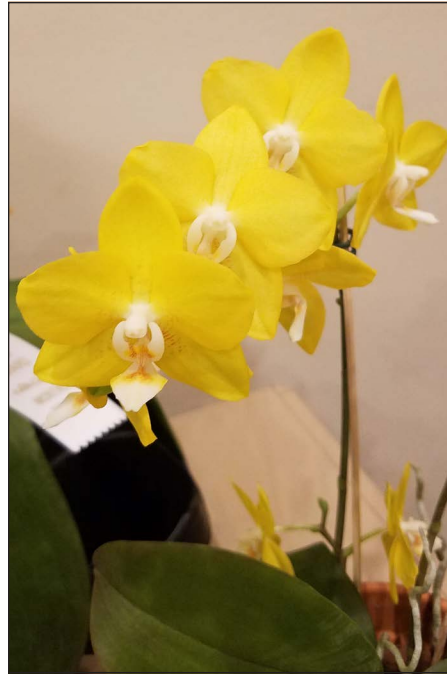
**White – *Paphiopedilum* Houghtoniae – Danny Lentz & Dianne Morgan**

**White – *Paphiopedilum* Chou-Yi Angel – Danny Lentz & Dianne Morgan**

### Class VII - Phalaenopsis Group



**Blue – *Phalaenopsis* No ID (mounted culture) – Nicholas Rust**



**Red – *Phalaenopsis* Sogo Meili 'F1751,' AM/AOS – Bob Grzesik**

Even though almost two decades have passed since this orchid was introduced by Sogo Orchids of Taiwan, there are still few *Phalaenopsis* hybrids that match the clear, bright yellow color these flowers exhibit. At close inspection there are some faint purple bars tucked away on the lower sepals, but essentially the eye sees a clear lemon yellow flower offset by a white lip. Other seedlings out of this cross could have been very different in look given the variability of genetics in *Phalaenopsis* breeding, but this form that made the grade and was introduced to commerce is outstanding.

While *Phal. amboinensis* makes up the largest share of this plant's genetics, there are 13 more species involved and it took 13 generations of selective breeding to yield this result. So it is easy to argue that, in this instance, thirteen is a very lucky number indeed.

**Red – *Phalaenopsis* Classic Pink – Jon Crate**

**White – *Phalaenopsis* Sogo Vivien – Jon Crate**

**White – *Phalaenopsis* Jong's Gigan Cherry 'Prince,' AM/AOS – Bob Grzesik**

### Class VIII - Vandaceous Group



**Blue – *Rhynconopsis* Suree – Vinh Nguyen**

This vandaceous cross was registered over 40 years ago in 1976 as *Opsistylis* Suree. That nothogenus is a mix of *Vandopsis* and *Rhyncostylis*. However, in 2015, *Vandopsis parishii* was reassigned as *Phalaenopsis hygrophila*, thus making this orchid a mix of *Rhyncostylis* and *Phalaenopsis* resulting in the currently accepted name. *Rhyncostylis gigantea* is both a parent and a grandparent in this cross, so the overall plant habit leans in that direction. While both parents produce highly patterned flowers, their combination is consistently a deep burgundy red, usually with a very narrow white margin, that may only be seen at close inspection.

The awarded plants from this cross average 33 flowers per inflorescence, usually just shy of two inches across. All the flower quality awards date back to the 1990's or earlier, but the two most recent awards were high scoring cultural awards for plants with hundreds of flowers, attesting to the results if it is well grown over many years. While definitely a slow grower, the fact that plants are still available in commerce shows its continued popularity.

To grow *Rhnp.* Suree well requires giving it bright conditions, warm temperatures and ideally basket culture with daily watering. A pot will help reduce the frequency of watering, but the media should be coarse and long lasting.

**Red – *Gastrochilus calceolaris* – Danny Lentz & Dianne Morgan**

**White – *Vanda* Nak Windy 'Mello Spirit,' AM/AOS – David Mellard**

**Class IX – Miscellaneous**

**Blue – *Lysudamuloa* Red Jewel – David Mellard**

Despite the somewhat complicated name, this stunning orchid is essentially *Lycaste*, with *Sudamerlycaste gigantea* and *Anguloa clowesii* so far back in the family tree that they make up only a small fraction of the combined genetics. The large flowers are a result of having a good dose of *Lyc. lasioglossa* and an even larger dose of *Lyc. virginialis* in the background. And while these large flowered species are

not considered easy to grow in the Deep South, somehow this orchid is much more forgiving and has been grown well even in Central Florida.

This form of the cross was cloned, but thousands were sent out into commerce without a specific clonal name, which should be ‘Sweet Baby,’ AM/AOS. Consequently, at least four other plants were given Awards of Merit by the AOS in 2016 and 2017 under different names that are most likely the very same form. Most of the plants in the collections of USA growers came from one or two wholesale producers in Hawaii where standards of labelling can be a bit lax.

*Lys.* Red Jewel seems to flower most profusely if allowed to stay fairly dry after growths have matured. This may cause the foliage to become a bit ragged, but the resulting, long lasting flowers make up for tattered edges and brown spots on the leaves. While growing, plants should have plenty of water and regular feeding. Bright, but somewhat filtered light will produce more flowers than shaded conditions.

**Red – *Lycaste lasioglossa* – David Mellard**

**White – *Dresslerella caesariata* – David Mellard**

**White – *Coelogyne prolifera* – Dan Williamson**