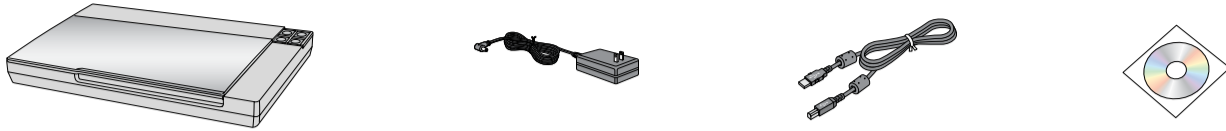
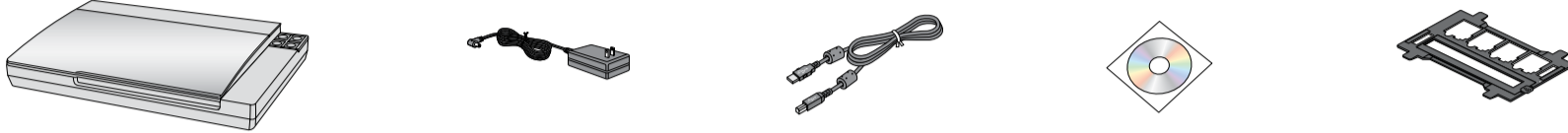


1 Unpack

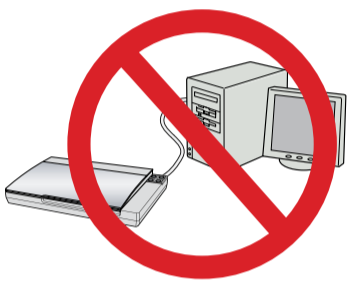
Perfection V30



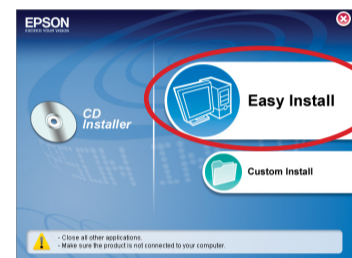
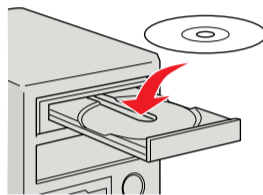
Perfection V300 Photo



2 Install software

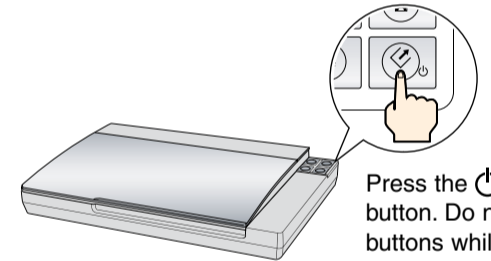
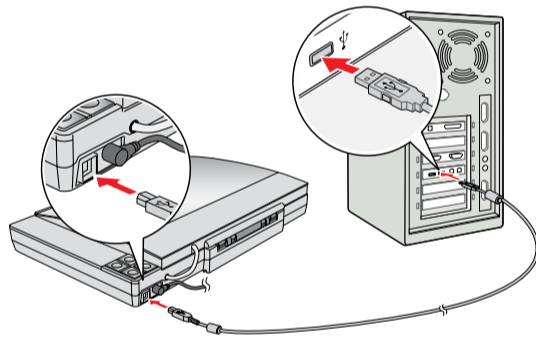
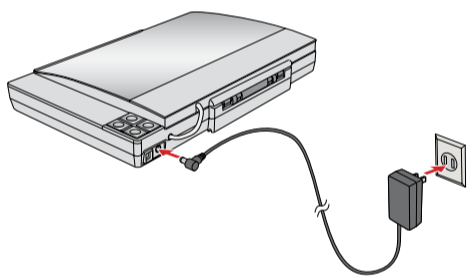



Do not connect the USB cable yet.



Follow the on-screen instructions and select the default options.

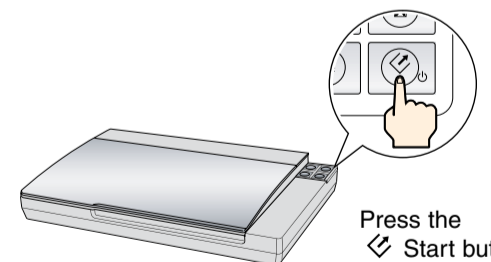
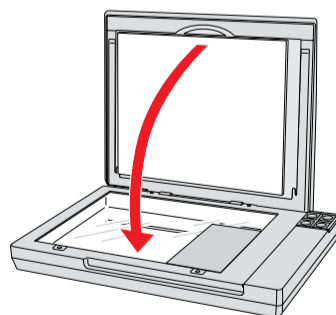
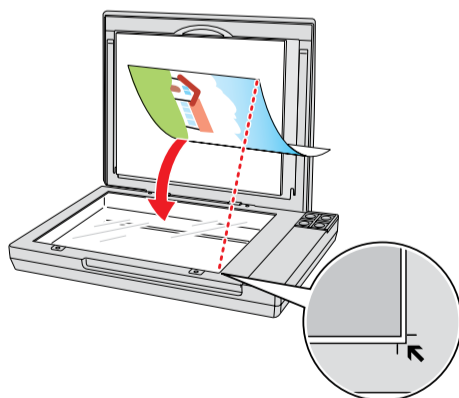
3 Connect and turn on




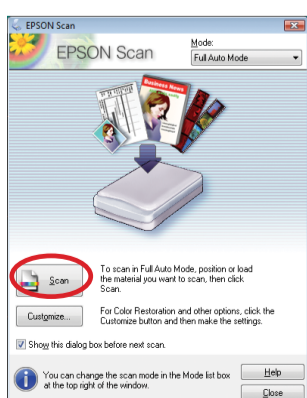
Press the  Power button. Do not press any buttons while the status light is flashing.

Note: To turn off the scanner, exit the scanner software, then press and hold the  Power button for 3 seconds.

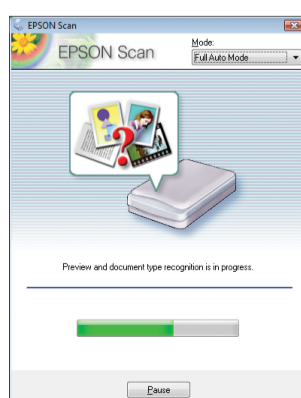
4 Scan a photo



Press the  Start button.



Click **Scan**.

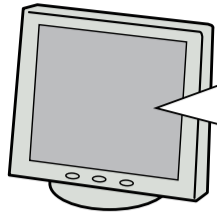
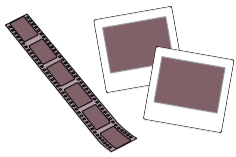


EPSON Scan scans your photo in **Full Auto Mode**. Wait for your scan to finish.

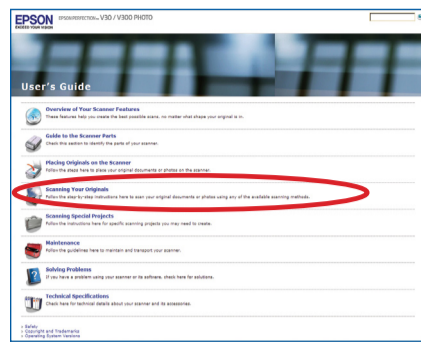


Do more

Scan film or slides (Perfection V300 Photo)



XXXXX
Manual



View the on-screen *User's Guide* for instructions.

Click **Scanning Your Originals**.

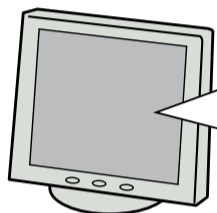
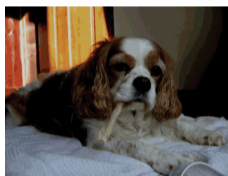
Restore color



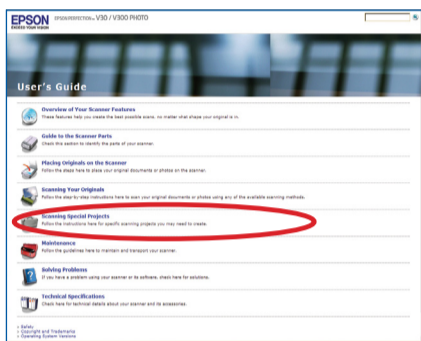
Remove dust from originals



Fix photos that are too dark because of backlighting



XXXXX
Manual



View the on-screen *User's Guide* for instructions.

Click **Scanning Special Projects**.



Help

Epson Scan

