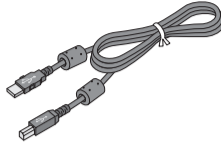
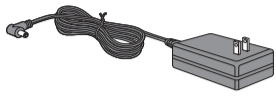
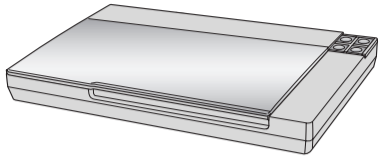


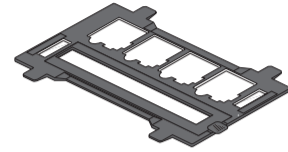
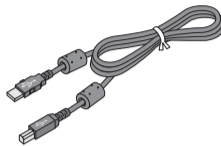
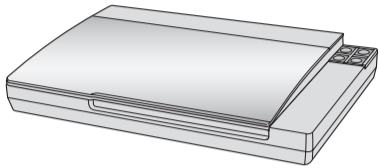


1 Unpack • Desembale el escáner

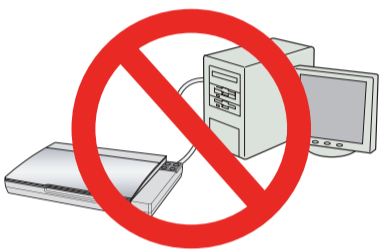
Perfection V30



Perfection V300 Photo

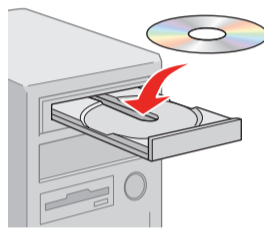


2 Install software • Instale el software



Do not connect the USB cable yet.

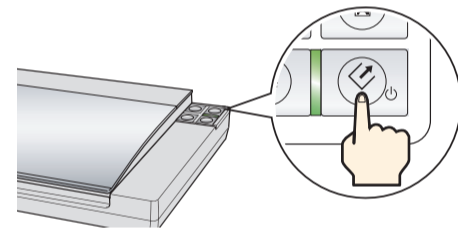
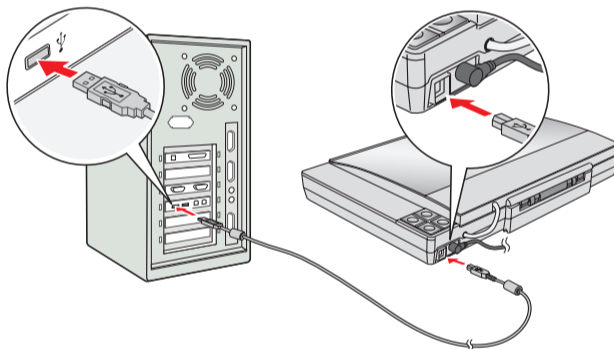
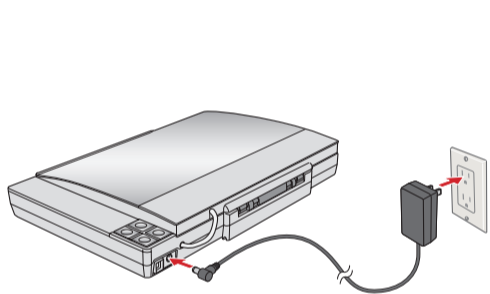
No conecte el cable USB todavía.



Select **English**, then select your product. Click **Install** and follow the on-screen instructions.

Seleccione **Español** y luego elija su producto. Haga clic en **Instalar** y siga las instrucciones que aparecen en la pantalla.

3 Turn on scanner • Encienda el escáner



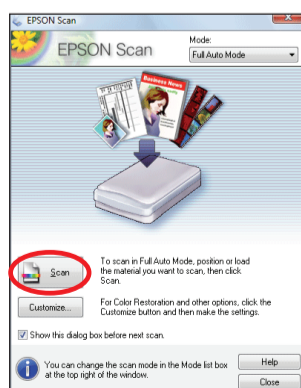
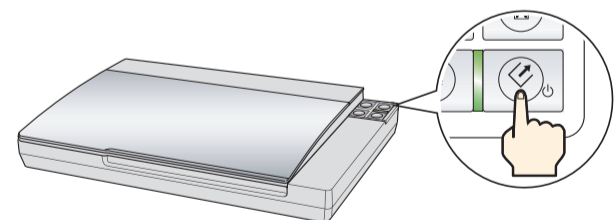
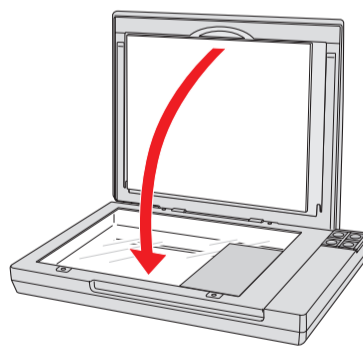
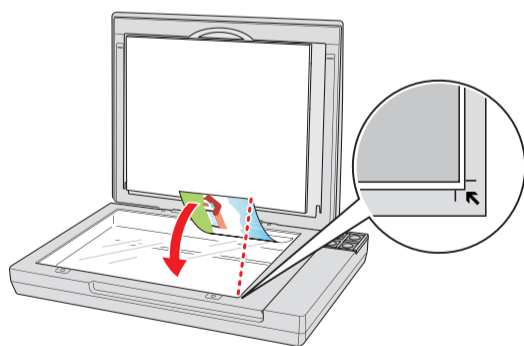
Press the **Power** button. Do not press any buttons while the status light is flashing.

Oprima el botón **Power**. No oprima ningún otro botón mientras el indicador de estado esté destellando.

Note: To turn off the scanner, press and hold the **Power** button for 3 seconds.

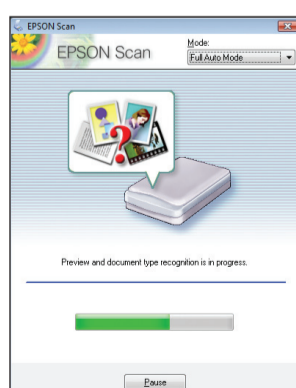
Nota: presione el botón **Power** por 3 segundos para apagar el escáner.

4 Scan a photo • Escanee una foto



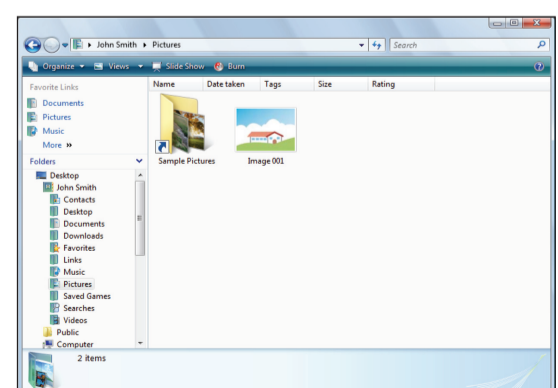
Click **Scan**.

Haga clic en **Escanear**.



Epson Scan scans your photo in **Full Auto Mode**. Wait for your scan to finish.

Epson Scan escanea su foto en **Mode Automático**. Espere a que termine la digitalización.



View your photo in **Pictures** or **My Pictures**.

Visualice su foto en la carpeta **Imágenes** o **Mis imágenes**.



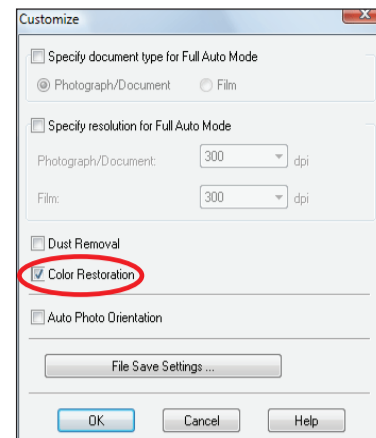
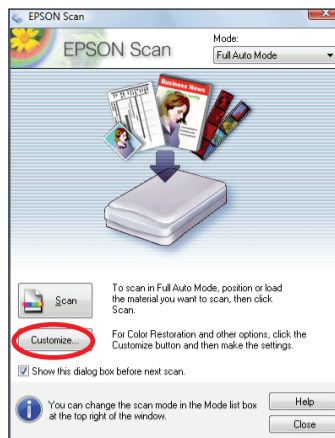
Do more • Más opciones

Restore color • Restaure el color

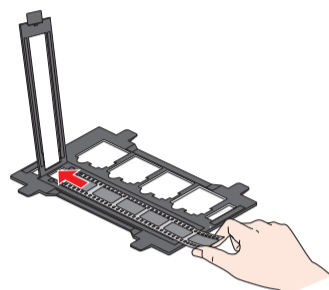
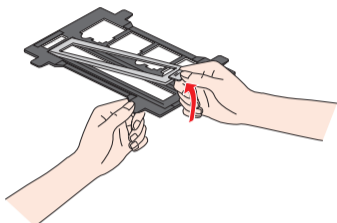
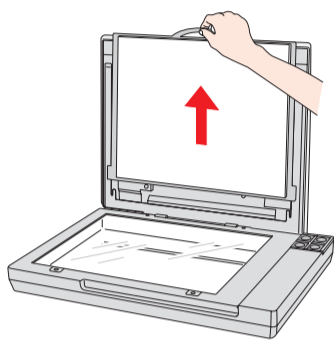


You can bring old, faded, or badly exposed photos back to life. See your on-screen *User's Guide* for details.

Puede restaurar fotografías antiguas, descoloridas o mal expuestas. Consulte el *Manual del usuario* en formato electrónico.

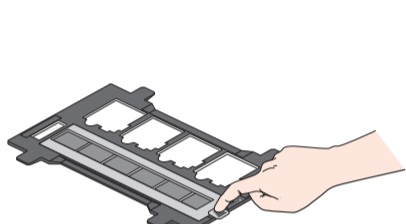


Scan film • Escanee negativos (Perfection V300 Photo only/solamente)



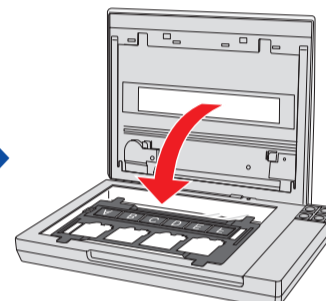
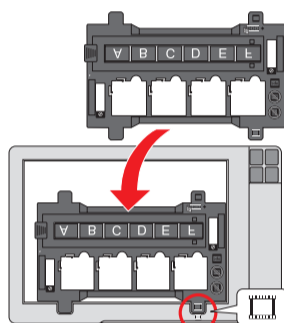
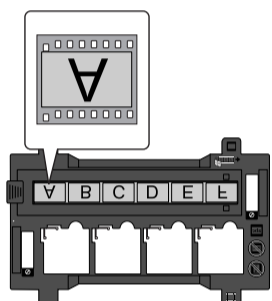
Insert negatives all the way into the film holder with the shiny side facing down.

Coloque los negativos en el soporte con el lado brillante hacia abajo.



Make sure the cover is completely closed all the way around the edges.

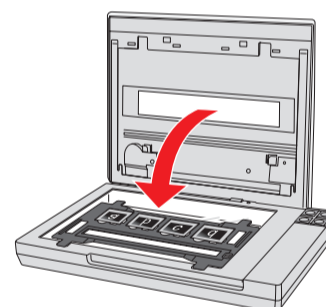
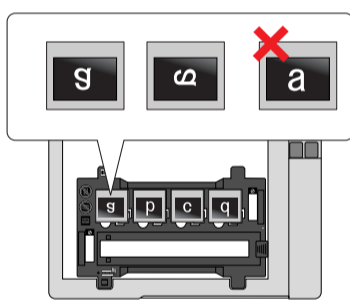
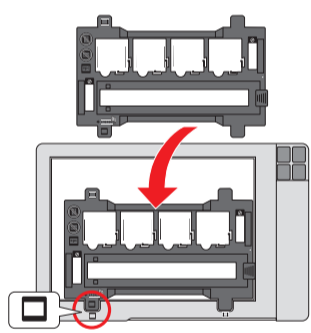
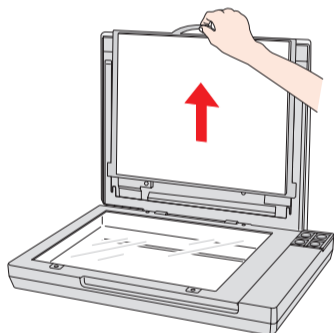
Confirme que la cubierta del soporte de negativos esté bien cerrada.



Press the Start button and follow the rest of the steps in section 4 "Scan a Photo".

Oprima el botón y siga los pasos indicados en la sección 4, "Escanee una foto".

Scan slides • Escanee diapositivas (Perfection V300 Photo only/solamente)



Press the Start button and follow the rest of the steps in section 4 "Scan a Photo".

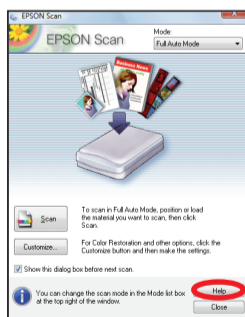
Oprima el botón y siga los pasos indicados en la sección 4, "Escanee una foto".

? Help • Ayuda

Scanner Software Help • Utilidad de ayuda del software de digitalización

Click the **Help** button on your scanner software screen.

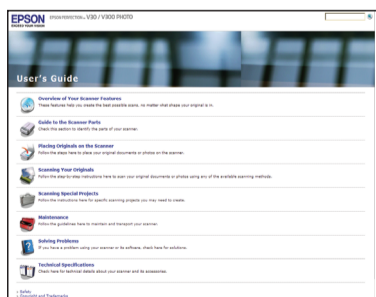
Haga clic en el botón **Ayuda** que aparece en la pantalla del software de digitalización.



User's Guide • Manual del usuario

Double-click the **Epson V30_V300 User's Guide** icon on your desktop.

Haga doble clic en el icono **Manual Epson V30_V300** ubicado en el escritorio.



Epson Technical Support • Soporte técnico de Epson

Technical Support for Users in the United States and Canada Internet Support

Visit Epson's support website at epson.com/support and select your product for solutions to common problems for the Perfection V30/V300 Photo. You can download drivers and documentation, get FAQs and troubleshooting advice, or e-mail Epson with your questions.

Speak to a Support Representative

U.S.: (562) 276-4382, 6 AM to 6 PM, Pacific Time, Monday through Friday

Canada: (905) 709-3839, 6 AM to 6 PM, Pacific Time, Monday through Friday

Days and hours of support are subject to change without notice. Toll or long distance charges may apply.

Soporte técnico en América Latina

Internet: www.latin.epson.com

Para hablar con un representante de soporte técnico

Argentina (54 11) 5167-0300

Chile (56 2) 230-9500

Colombia (57 1) 523-5000

Costa Rica (50 6) 2210-9555

800-377-6627

México

México, D.F. (52 55) 1323-2052

Resto del país 01-800-087-1080

Perú (51 1) 418-0210

Venezuela (58 212) 240-1111

Software Technical Support • Soporte técnico del software

ArcSoft MediaImpression™: (510) 440-9901/(510) 440-1270 (fax), www.arcsoft.com, support@arcsoft.com

ABBYY® FineReader®: (510) 226-6717, www.abbyyusa.com, support@abbyyusa.com

Epson is a registered trademark and Epson Exceed Your Vision is a registered logomark of Seiko Epson Corporation. Perfection is a registered trademark of Epson America, Inc. General Notice: Other product names used herein are for identification purposes only and may be trademarks of their respective owners. Epson disclaims any and all rights in those marks. This information is subject to change without notice.

Epson es una marca registrada y "Epson Exceed Your Vision" es un logotipo registrado de Seiko Epson Corporation. Perfection es una marca registrada de Epson America, Inc.

Aviso general: los otros productos que se mencionan en esta publicación aparecen únicamente con fines de identificación y pueden ser marcas comerciales de sus respectivos propietarios.

Epson renuncia a cualquier derecho sobre dichas marcas. La información del presente está sujeta a cambios sin previo aviso.

© 2008 Epson America Inc. 9/08 CPD-25656R1