

FUJIFILM
OFFICIAL IMAGING SPONSOR



digital
Tools for the imagination.

**2.1 MEGA
PIXELS**
3× ZOOM

DIGITAL CAMERA
FinePix 2400
Zoom

New

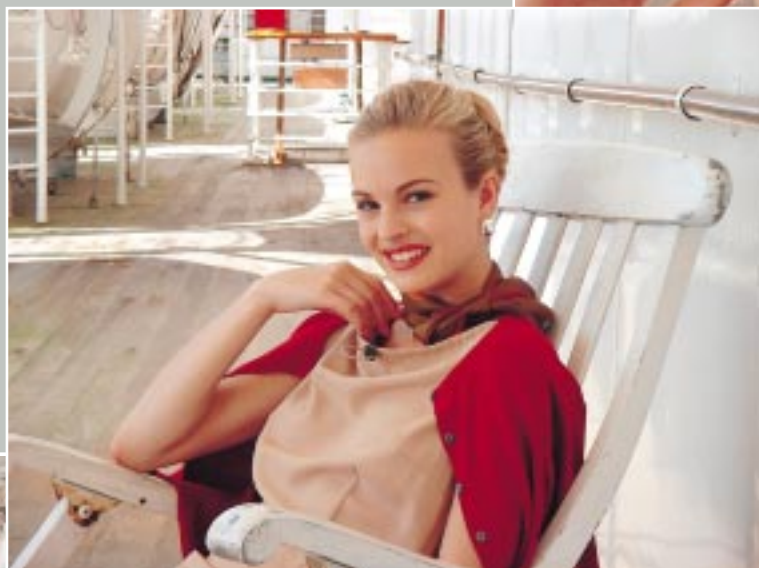


Everything You Want in Digital Advantages

It's Easy, Affordable, and Sophisticated



228mm (Digital 2X Telephoto Mode with 3X optical zoom setting)



114 mm (3X optical zoom setting)



38 mm (Wide-angle setting)

All focal distances shown above are 35mm camera equivalent.

FinePix2400 Zoom incorporates every evolutionary progress of digital cameras. It offers all the latest functions of digital cameras that you could ask for. It has a high-quality 2.1 megapixel CCD, 3X optical zooming, continuous shooting, intelligent Auto White Balance and more to ensure high-quality pictures whenever you want them. With all these advanced features packed in its stylish, compact body, the FinePix2400 Zoom is the ultimate, yet affordable digital camera on the market today.



Actual Size

DIGITAL CAMERA FinePix 2400 Zoom

2.1-Million Pixel CCD

With its 2.11 million square pixels, the 1/2.7-inch CCD delivers ultra-high resolution (1,600 x 1,200 pixels) for sharper and more life-like images. The CCD offers a high S/N ratio so that subjects look smooth and natural.

High-Performance Zooming

FinePix2400 Zoom sports a high-performance Fujinon 3X optical zoom lens, which has 9 lens elements in 6 groups to deliver the 38 – 114 mm coverage of a 35mm camera. Thanks to its precise auto focus (AF) system, you can get a sharp, focused image in a moment.

FinePix2400 Zoom also offers digital telephoto* enlarging up to 2.5X (640 x 480 pixel mode). Combined with the 3X optical zoom, you can obtain a total magnification effect of 7.5X.

* Even in the 1,280 x 960 pixel mode, up to 1.25X enlargement is possible. When used with the 3X optical zoom, the camera's total magnification effect becomes approximately 4.75X.

Mode Dial and Four-Direction Button

The Mode Dial and Four-Direction button enable very easy and quick settings. From shooting to playback functions, they give you full control of the camera at a press of a button.

Perfect Automation

FinePix2400 Zoom delivers perfect automation. The Auto Mode makes it possible for you to shoot pictures under virtually any situation. The camera sets the appropriate exposure and color balance by means of high-precision

64-zone TTL metering with programmed auto exposure and intelligent Auto White Balance. If your subject is moving fast, select the Continuous Mode to capture it in motion at approximately 1.5 frames/sec. (640 x 480 pixels). For extreme close-up shooting, select



the Macro Mode to move in as

close as 10 cm.

Manual setting is also available in the FinePix2400 Zoom, so that you can control exposure and white balance according to your preference for photographic creativity.

Playback Function

Immediately after shooting, you can view the pictures on the color LCD monitor of the camera.

The FinePix2400 Zoom offers some impressive playback options. In addition to Single Frame Playback and Auto Playback, the 4X Zoom Playback brings out fine details and the Multi-Frame Playback displays nine different images simultaneously.



USB Digital Interface

The FinePix2400 Zoom has a USB digital interface for fast and easy transfer of image files. After transferring the image files to your PC, the Exif Viewer (bundled imaging software) lets you not only view the



images captured by the camera, but also check the exposure information stored in the "Exif" file header.

More Features

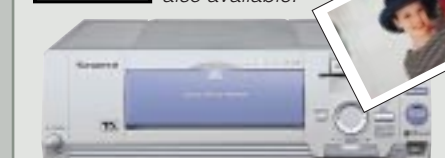
AA Alkaline Batteries: FinePix2400 Zoom is powered by four AA alkaline batteries, making replacement very easy anywhere in the world. Reflecting a thorough reassessment of its power consumption efficiency, the FinePix2400 Zoom keeps going for a maximum of 200 shots* when the flash is used half of the time and the LCD monitor is always on, and 400 shots* when the flash is used half of the time and the LCD monitor is always off.

* Based on Fujifilm's standard testing conditions

DPOF and New File System Compatibility: FinePix2400 Zoom complies with the Design rule for Digital Camera File system standards and the Digital Printing Order Format (DPOF) recording.

FinePix Printer NX-500

The NX-500 uses Fujifilm's original Thermo-Autochrome (TA) system to achieve photo-realistic quality. Along with its 306-dpi thermal head, the newly-developed TA paper delivers whiter whites and an improved gloss finish, enabling the NX-500 to produce photo-realistic quality prints with vivid colors and sharper contrast. A USB interface for connecting a PC and a SmartMedia™ card slot for direct printout are also available.



FUNCTIONS



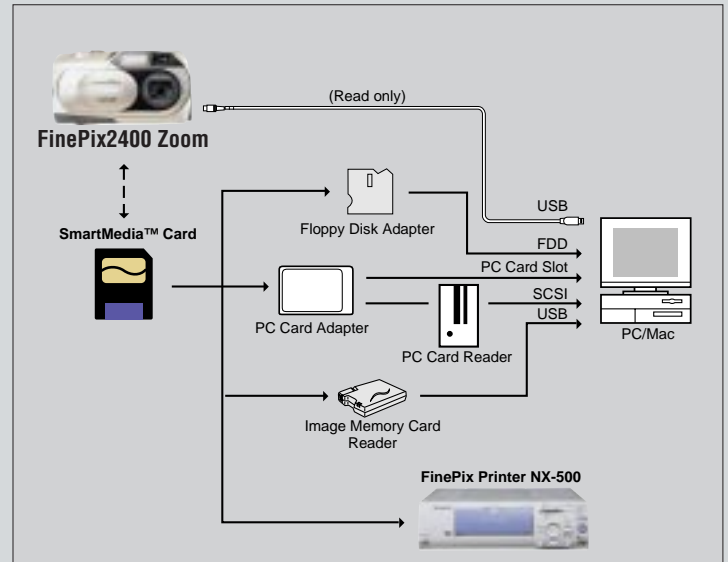
SPECIFICATIONS

DIGITAL CAMERA FinePix2400 ZOOM

CCD sensor	1/2.7-inch CCD with 2.11 million square pixels				
Image file size	1,600 × 1,200 pixels / 1,280 × 960 pixels / 640 × 480 pixels				
File format	JPEG (Exif 2.1) *Design rule for Camera File system compliant/DPOF-compatible				
Storage media	SmartMedia™ Cards (3.3V, 2 – 64 MB)				
Number of images (at 1,600 × 1,200 mode)	Mode (Compression ratio)	MG-8S	MG-16S/SW	MG-32S/SW	MG-64S/SW
	Fine (Approx. 1/5)	10	20	41	82
	Normal (Approx. 1/10)	19	39	79	159
	Basic (Approx. 1/20)	39	75	152	306
Lens	Fujinon optical 3X zoom lens (Equivalent to 38 – 114 mm on a 35 mm camera)				
Focal distance	Normal: Approx. 80 cm/31.5 in. to infinity Macro: Approx. 10 cm/3.9 in. to 80 cm/31.5 in.				
Aperture	F3.5/F8.7				
Viewfinder	Real-image optical viewfinder				
Exposure control	64-zone TTL metering, Program AE (Exposure compensation in the Manual mode)				
Sensitivity	Equivalent to ISO 100				
Shutter speeds	Variable-speed 1/2 to 1/1,000 sec. (combined with mechanical shutter)				
White balance	Automatic Manual [Fine, Shade, Fluorescent light (Daylight), Fluorescent light (Warm white), Fluorescent light (Cool white), Incandescent light]				
Flash	Auto flash using flash control sensor 5 modes (Auto, red-eye reduction, forced, suppressed, slow synchro) Effective range: Wide Approx. 0.2 – 3.0 m/7.9 in. – 9.8 ft				
LCD monitor	1.6 inch D-TFD (55,000 pixels)				
Interface	USB				
Power source	4 AA-size alkaline batteries 4 AA-size Ni-MH (nickel metal hydride) batteries 4 AA-size long-life Ni-Cd (nickel-cadmium) batteries AC Power Adapter (optional)				
Dimensions	125 (W) × 65 (H) × 39 (D) mm/4.9 (W) × 2.6 (H) × 1.5 (D) in.				
Weight	250 g / 8.8 oz (excluding batteries)				
Other functions	Self-timer Digital 2.5X telephoto (640 × 480 mode), 1.25X telephoto (1,280 × 960) Continuous shooting (640 × 480 mode) Slow synchro Exposure compensation Playback: Single frame (with 4X Playback zoom), 9 multi-frame Erase: single/all Protect DPOF setting				
Accessories included	8MB SmartMedia™ card 4 AA-size batteries Hand strap USB cable CD-ROM • USB driver • Exif Viewer • DP Editor • Adobe® PhotoDeluxe HE 4.0 for Windows® • Adobe® ActiveShare for Windows®				

Specifications are subject to change without notice.

SYSTEM CONFIGURATION



OPTIONAL ACCESSORIES

	Image Memory Card MG-4S MG-8S MG-16S/SW MG-32S/SW MG-64S/SW		AC Power Adapter AC-5V
	Floppy Disk Adapter FD-A2		Battery Charger with Battery BK-NH (charged in approx. 2 hours, AC 220V only)
	PC Card Adapter PC-AD3		Rechargeable Battery 2HR-3UF (2 × AA-type Ni-MH)
	Image Memory Card Reader SM-R1/R2		Soft Case SC-FX4

Adobe is a registered trademark of Adobe Systems Inc.
Windows is a registered trademark of Microsoft Corporation.
All other trademarks are the property of their respective holders.

For more information on Fujifilm digital products, please visit our Website: <http://home.fujifilm.com>

FUJIFILM
FUJI PHOTO FILM CO., LTD.

26-30, NISHIAZABU 2-CHOME, MINATO-KU, TOKYO 106-8620, JAPAN

Ref. No. EB-017E (SK-00-08-DT-MW) Printed in Japan © 2000 Fuji Photo Film Co., Ltd.